

**REGIONAL SPECIALISED METEOROLOGICAL CENTRE-TROPICAL CYCLONES, NEW DELHI**  
**TROPICAL WEATHER OUTLOOK**

**DEMS-RSMC TROPICALCYCLONES NEW DELHI DATED 09.09.2022**

**TROPICAL WEATHER OUTLOOK FOR NORTH INDIAN OCEAN (THE BAY OF BENGAL AND ARABIAN SEA) VALID FOR NEXT 120 HOURS ISSUED AT 0600 UTC OF 09.09.2022 BASED ON 0300 UTC OF 09.09.2022.**

**BAY OF BENGAL:**

YESTERDAY'S LOW PRESSURE AREA (LPA) OVER WESTCENTRAL & ADJOINING EASTCENTRAL BAY OF BENGAL (BOB) LAY OVER WESTCENTRAL AND ADJOINING NORTHWEST BOB OFF NORTH ANDHRA PRADESH & SOUTH ODISHA COASTS AT 0300 UTC OF TODAY, THE 9TH SEPTEMBER. IT IS VERY LIKELY TO BECOME WELL MARKED OVER THE SAME REGION DURING NEXT 36 HOURS.

SCATTERED TO BROKEN LOW AND MEDIUM CLOUDS WITH EMBEDDED INTENSE TO VERY INTENSE CONVECTION LAY OVER CENTRAL & NORTH BOB AND COASTAL ANDHRA PRADESH. THE CLOUD TOP TEMPERATURE (CTT) IS MINUS 90 DEG CELSIUS IN ASSOCIATION WITH LPA OVER THE REGION. SCATTERED TO BROKEN LOW AND MEDIUM CLOUDS WITH EMBEDDED MODERATE TO INTENSE CONVECTION LAY OVER SOUTH BOB & ANDAMAN SEA.

**PROBABILITY OF CYCLOGENESIS (FORMATION OF DEPRESSION) DURING NEXT 120 HRS:**

24 HOURS	24-48 HOURS	48-72 HOURS	72-96 HOURS	96-120 HOURS
NIL	NIL	LOW	NIL	NIL

**ARABIAN SEA:**

SCATTERED TO BROKEN LOW AND MEDIUM CLOUDS WITH EMBEDDED INTENSE TO VERY INTENSE CONVECTION LAY OVER EASTCENTRAL ADJOINING NORTHEAST ARABIAN SEA WITH MINIMUM CTT MINUS 90 DEGREE CELSIUS. SCATTERED LOW AND MEDIUM CLOUDS WITH EMBEDDED MODERATE TO INTENSE CONVECTION LAY OVER SOUTHEAST & WESTCENTRAL ARABIAN SEA.

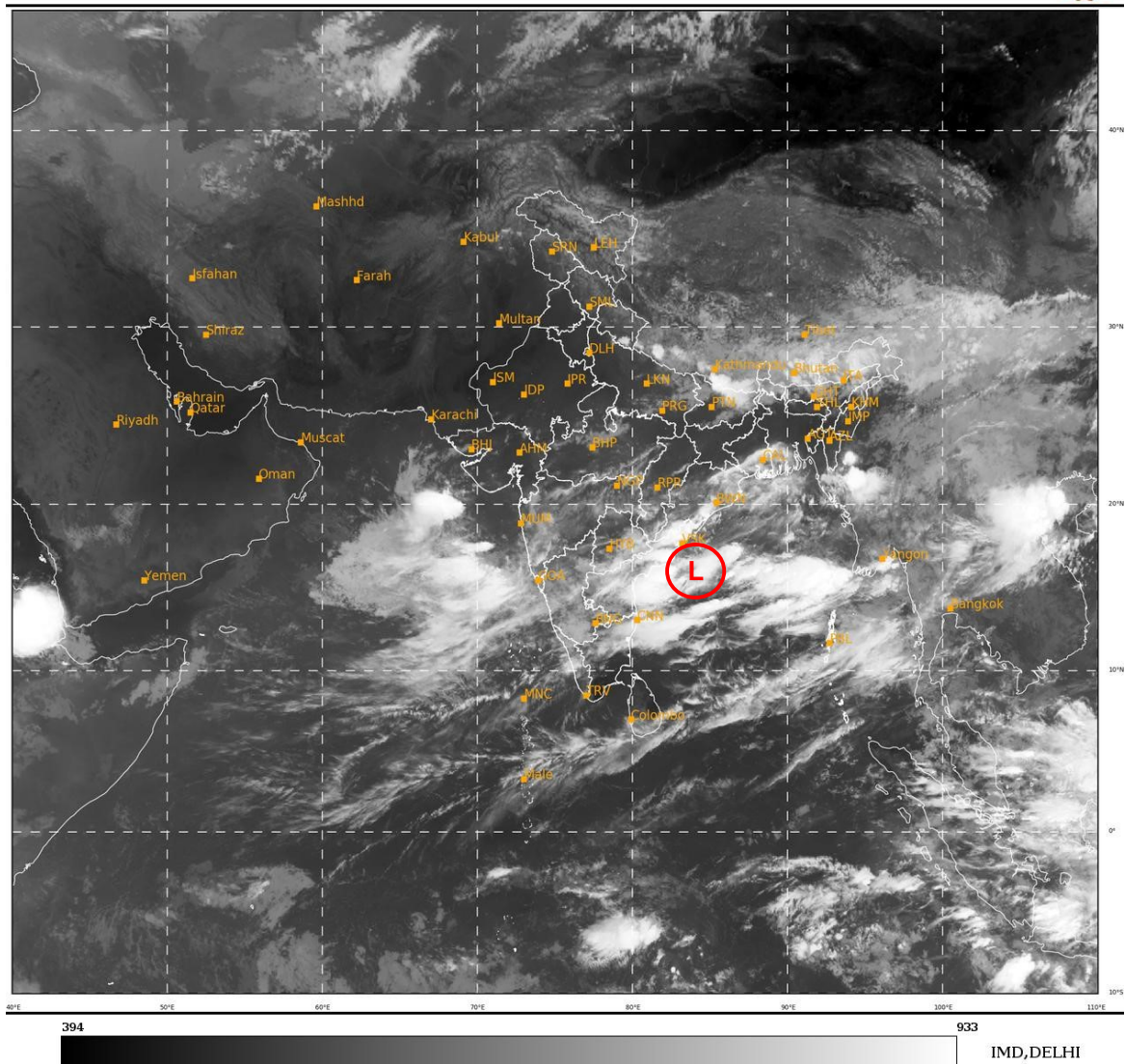
**PROBABILITY OF CYCLOGENESIS (FORMATION OF DEPRESSION) DURING NEXT 120 HRS:**

24 HOURS	24-48 HOURS	48-72 HOURS	72-96 HOURS	96-120 HOURS
NIL	NIL	NIL	NIL	NIL

**Remarks:** NIL

SAT : INSAT-3D IMG  
IMG\_TIR1 10.8 um  
L1C Mercator

09-09-2022/(0300 to 0327) GMT  
09-09-2022/(0830 to 0857) IST



**L: LOW PRESSURE AREA**

Cloud distribution: (a) Isolated: <25%, Scattered:25-50%, Broken: 51-75%, Solid:>75%, Convection Intensity: (a) Weak: Cloud Top Temperature (CTT) >-25°C, (b) Moderate: CTT: - 25°C to -40°C, (c) Intense: CTT: - 41°C to -70°C and (d) Very Intense: : Less than -70°C  
PROBABILITY OF CYCLOGENESIS (FORMATION OF DEPRESSION):NIL: 0%, LOW: 1-33%, , MODERATE: 34-66% AND HIGH: 67-100%  
This is a guidance Bulletin for WMO/ESCAP Panel Member countries. Visit respective National websites for Country specific Bulletins